



# NATURAL SELECTION

SAFARIS OF CHARACTER

*South African Residents Special Rates*

## BORN TO EXPLORE

BOTSWANA • NAMIBIA • SOUTH AFRICA

RATES VALID  
UNTIL 31 MARCH  
2027 FOR SA  
RESIDENTS  
ONLY



# NATURAL SELECTION

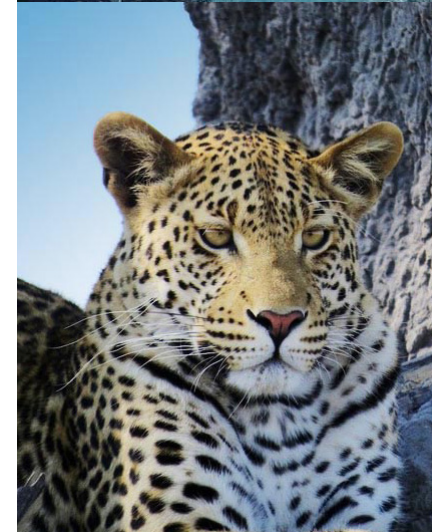
SAFARIS OF CHARACTER

## Safaris of Character...

At Natural Selection we are all about remarkable experiences in wild, untouched places. Our safaris are for adventurers, explorers, wilderness enthusiasts and star gazers. We are a conservation driven tourism company offering a collection of exceptional safaris and lodges – while making a meaningful contribution to conserving and protecting Africa’s last great wild places. For over 30 years our founders have been pioneering unique safari experiences across Southern Africa’s least explored places and spaces. From intimate encounters with the continent’s iconic wildlife to meaningful interactions with the people who live here.

With our portfolio of 26 welcoming camps and lodges across three countries, we are driven to make a meaningful difference and wholeheartedly believe in travel that matters.

OUR CAMPS ARE **UNIQUE** AND **WILD**. WE OFFER ONE-OF-A-KIND EXPERIENCES THAT ARE **FULL OF SOUL** AND **CHARACTER**.



# Because you were born to explore...

THESE DISCOUNTED RATES ARE VALID FOR SOUTH AFRICAN RESIDENTS ONLY.

We should all be afforded the opportunity to explore this glorious continent of ours. That's why these special local residents rates make safari travel to Southern Africa's wild places much more accessible for local travellers.

Natural Selection also dedicate 1.5% of every guests stay at our camps and lodges, in addition to a per person per night Conservation, Community and Reserve (CCR) fee, directly to protecting wildlife, wildlife habitat, and supporting communities who live alongside wildlife and are committed to wildlife conservation.

---

FIND YOURSELF ON  
**NEW ADVENTURES,**  
LOSE YOURSELF IN THE  
EXPERIENCE...

*The Makgadikgadi Salt Pans*

ONE OF THE ONLY PLACES IN THE WORLD WHERE THE **SILENCE IS SO COMPLETE** YOU CAN HEAR THE BLOOD CIRCULATING THROUGH YOUR EARS.



# Travel that matters...

With our portfolio of 26 welcoming camps and lodges across three countries, we are driven to make a meaningful difference and wholeheartedly believe in travel that matters.

We firmly believe that conservation based tourism plays an important role in the protection of wilderness areas around the globe, particularly in Africa.

That's why we make sure every visitor's trip counts. Simply by visiting a wildlife area, travellers are encouraging its continued protection through tourism revenue. In addition, 1.5% of every booking at our lodges plus a per person per night Community, Conservation, and Reserve (CCR) Fee goes directly to protecting wildlife, wildlife habitat, and supporting communities who live alongside wildlife.

Since 2016, Natural Selection, together with its operational partners, have committed funding to over 120 conservation and community outreach projects in the wildlife areas of Botswana, Namibia and South Africa.

Aside from the donations we make to conservation on behalf of every guest, we also offer conservation immersion trips and add-ons. Like all of our trips, we focus on providing one-of-a-kind, characterful experiences that leave guests a little more committed to making a difference.

For more information on the projects we support, or if you would like to assist further in our conservation or community work, please visit our website or scan the code.

[www.naturalselectionfoundation.org](http://www.naturalselectionfoundation.org)

SCAN CODE FOR  
PROJECT INFORMATION



# OUR CAMPS & LODGES...

If you have forever been dreaming of an iconic Okavango Delta experience, an escape to the awe inspiring deserts of Namibia or a South African coastal beach lodge retreat, then now is the perfect opportunity to get there.

## Botswana



### KHWAI PRIVATE RESERVE, OKAVANGO DELTA

Tuludi  
Sable Alley  
Little Sable  
Elephant Pan  
Skybeds

### NORTHERN OKAVANGO DELTA

Duke's Camp  
Duke's East  
North Island Okavango  
Mbamba  
Expeditions Camp

### SOUTHERN OKAVANGO DELTA

Mokolwane

### MOREMI GAME RESERVE

Tawana

### MAUN

Thamo Telele

### THE KALAHARI

Jack's Camp  
San Camp  
Camp Kalahari  
Planet Baobab

### BOTETI RIVER

Meno a Kwena

## Namibia



### NAMIBRAND NATURE RESERVE

Kwessi Dunes

### KAOKOLAND

Hoanib Valley Camp  
Hoanib Elephant Camp

### ETOSHA HEIGHTS PRIVATE RESERVE

Safarihoek  
Etosha Mountain Lodge

### NKASA RUPARA NATIONAL PARK

Nkasa Linyanti

### SKELETON COAST

Shipwreck Lodge

## South Africa



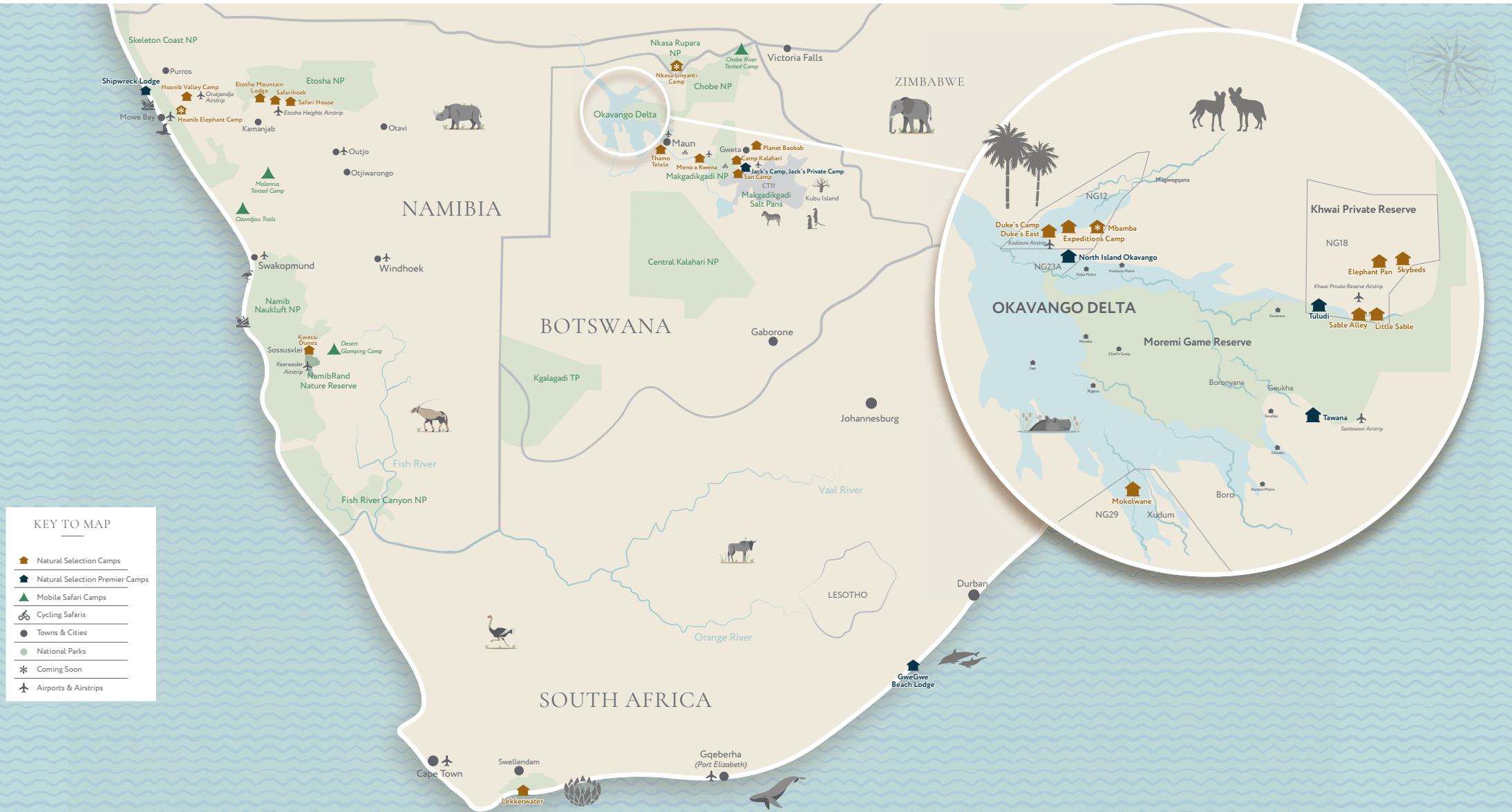
### DE HOOP NATURE RESERVE

Lekkerwater

### MKAMBATI NATURE RESERVE

GweGwe Beach Lodge

# A GUIDE TO OUR SAFARIS OF CHARACTER



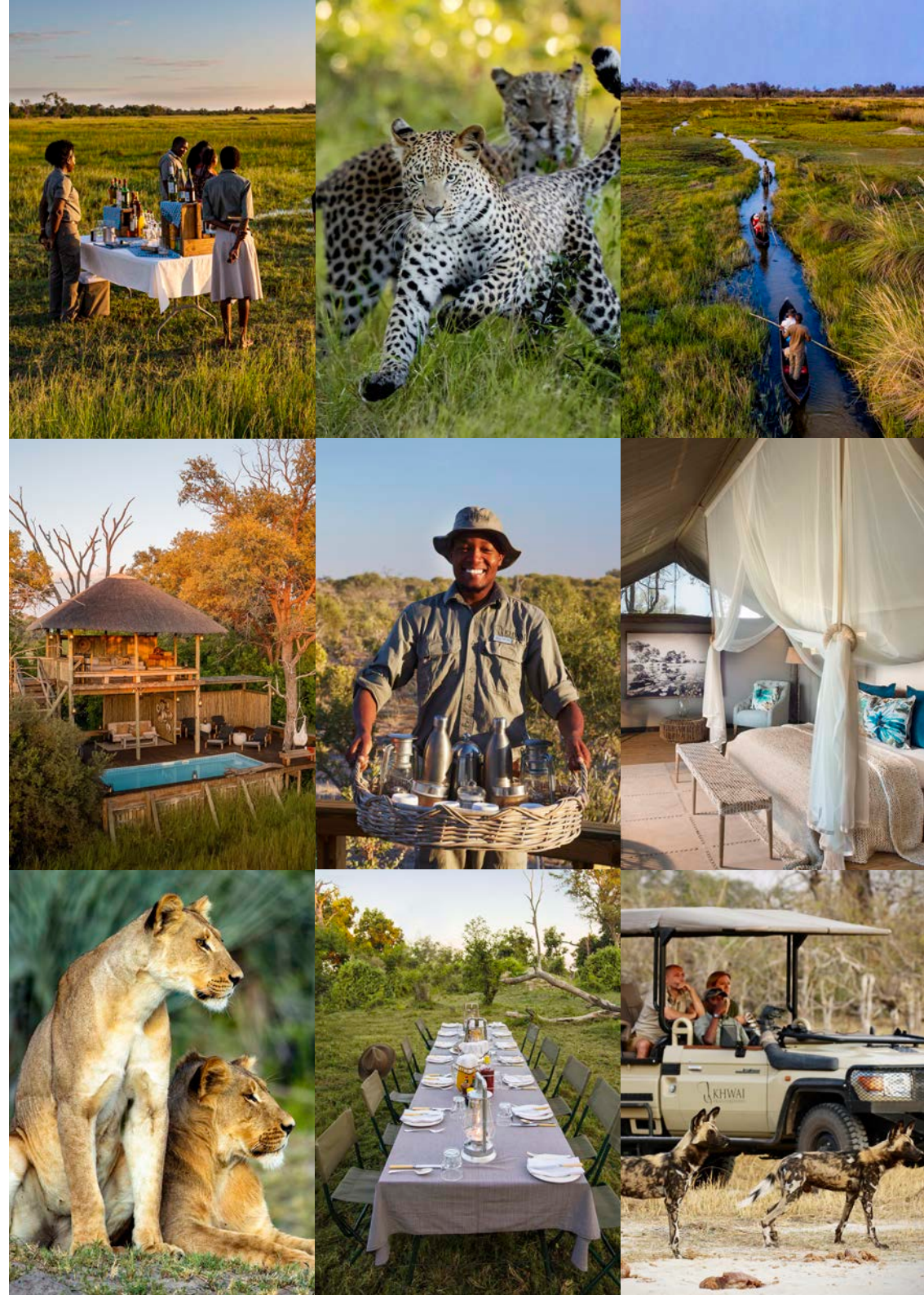
# BOTSWANA



## KHWAI PRIVATE RESERVE Okavango Delta

A 200,000-hectare area of pristine wilderness in the northern reaches of the famous Okavango Delta, Khwai Private Reserve is one of the most beautifully iconic landscapes in Botswana. Mopane clusters jostle for space with riverine forest, pretty waterholes dot the floodplains, and waterways wind their way across the landscape from the Khwai River. Bursting with all the signature wildlife, Khwai Private Reserve has an excellent reputation for hiding the rarer species of the animal kingdom, including wild dogs, serval cats, honey badgers and the elusive pangolin.

**WILD & FREE...**  
**THE ULTIMATE**  
**SAFARI EXPERIENCE!**



Tuludi



## TULUDI

Khwai Private Reserve,  
Okavango Delta

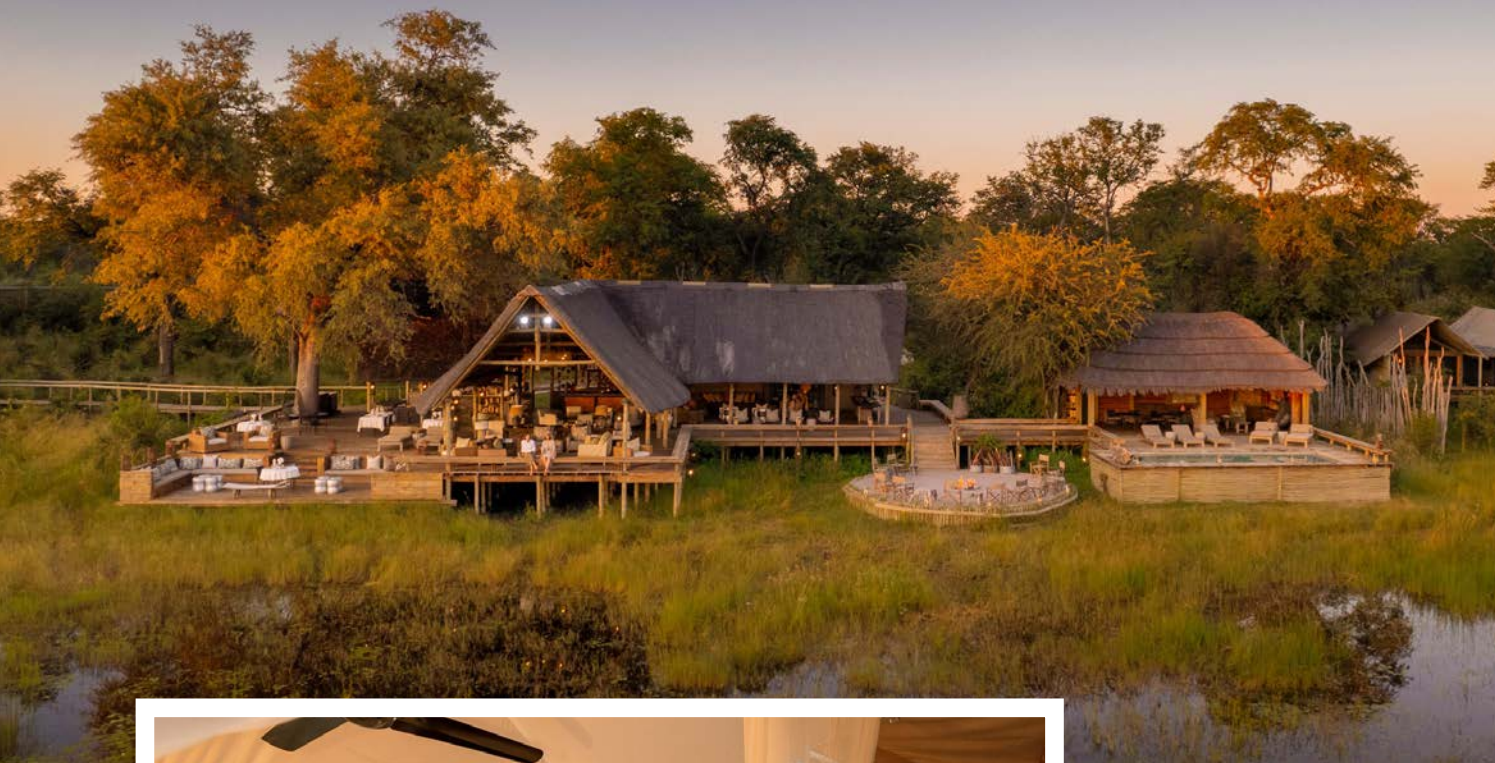


If you've been forever dreaming of an iconic Okavango Delta experience, then end your search with Tuludi. Seven, tree-house style rooms are shaded by the boughs of cool Leadwood trees, sophisticated interiors mix the contemporary with the traditional, and airy spaces are filled with maps, botanicals and treasures from around the area. The result? An exclusive oasis that you'll be delighted to return to after a day exploring the extraordinary ecosystem either on a guided walk, mokoro or game drive.

### *Special Rate*

R9,665 pppn, plus R275 CCR Fee  
*Children 6 yrs and older are welcome.*

## Sable Alley



## SABLE ALLEY

Khwai Private Reserve,  
Okavango Delta



Sable Alley is a piece of light, bright and beautiful luxury amid the game-rich floodplains of Khwai Private Reserve. Located on the banks of a lily-covered lagoon, home to harrumphing hippo and a favourite drinking spot for elephant and buffalo, the big game quite literally comes to you here. But as tempting as it is to stay in camp, venture out you should, for Khwai offers an exclusive safari experience, jam-packed with wildlife - and Sable Alley allows you to do it in style.

### Special Rate

R6,545 pppn, plus R275 CCR Fee

Children 6 yrs and older are welcome.

## Little Sable



## LITTLE SABLE

Khwai Private Reserve, Okavango Delta



The little sister to Sable Alley in the Khwai Private Reserve, Little Sable is all about pared-back luxury and a classic delta safari experience at a simply unbeatable price. With only eight, Meru-style tents, it's an intimate camp with an emphasis on comfort, hospitality and simple style and the old adage of "it's got everything you need and nothing you don't" couldn't be truer. Further afield, the safari is a classic Okavango Delta experience down to a tee from the landscape to the activities to the wildlife.

### Special Rate

R4,715 pppn, plus R275 CCR Fee

Children 6 yrs and older are welcome.

## Elephant Pan



## ELEPHANT PAN

Khwai Private Reserve,  
Okavango Delta



A cosy and comfortable tented camp overlooking a magnificent forest of cathedral mopane trees and a watery lagoon in the heart of the Khwai Private Reserve with an abundance of game all year round. The eight tents look out over a lagoon and in the morning, you'll wake up to elephant ambling past, spend your siesta watching herds splash and snort, and fall asleep to antelope grazing outside your canvas walls. This isn't a place for those looking for opulence and extravagance; it's a piece of big-game Africa, where the wildlife encounters are authentic, intimate and always wild.

### Special Rate

R4,715 pppn, plus R275 CCR Fee

*Children 6 yrs and older are welcome.*

## Skybeds



## SKYBEDS

Khwai Private Reserve, Okavango Delta



This safari experience will leave you starstruck! Sleep atop an elevated platform only metres away from Africa's big game in Khwai Private Reserve. This is an unforgettable way to spend a night in the Okavango Delta. Your Skybed (there are 3 in total) is a double-storey raised platform overlooking a prolific waterhole. You'll find a bathroom on the first floor, a dressing area in the middle, and the ultimate cherry on the top floor - an enormous double bed, draped in white linens and completely open to the stars!

### Special Rates

R4,715 pppn, plus R275 CCR Fee

*Open 1 April - 31 Oct. Children 16 yrs & older are welcome.*

*Ages 12 - 15 years allowed if exclusive use is booked.*



## NORTHERN OKAVANGO DELTA

A diverse matrix of expansive floodplains, woodlands and waterways, the Okavango Delta is undoubtedly one of the most famous wildlife-watching destinations in the world - and it lives up to every expectation. A unique wetland area that has remained unchanged for centuries, the diverse habitats are home to all the stars of the animal kingdom from big cats to buffalo, and antelope to aardvark. The diversity doesn't simply end with the fauna, however, and with mokoro safaris, game drives, nature walks and boat trips to enjoy, the Delta provides a safari experience that's hard to beat.

## NORTH ISLAND OKAVANGO

### Northern Okavango Delta

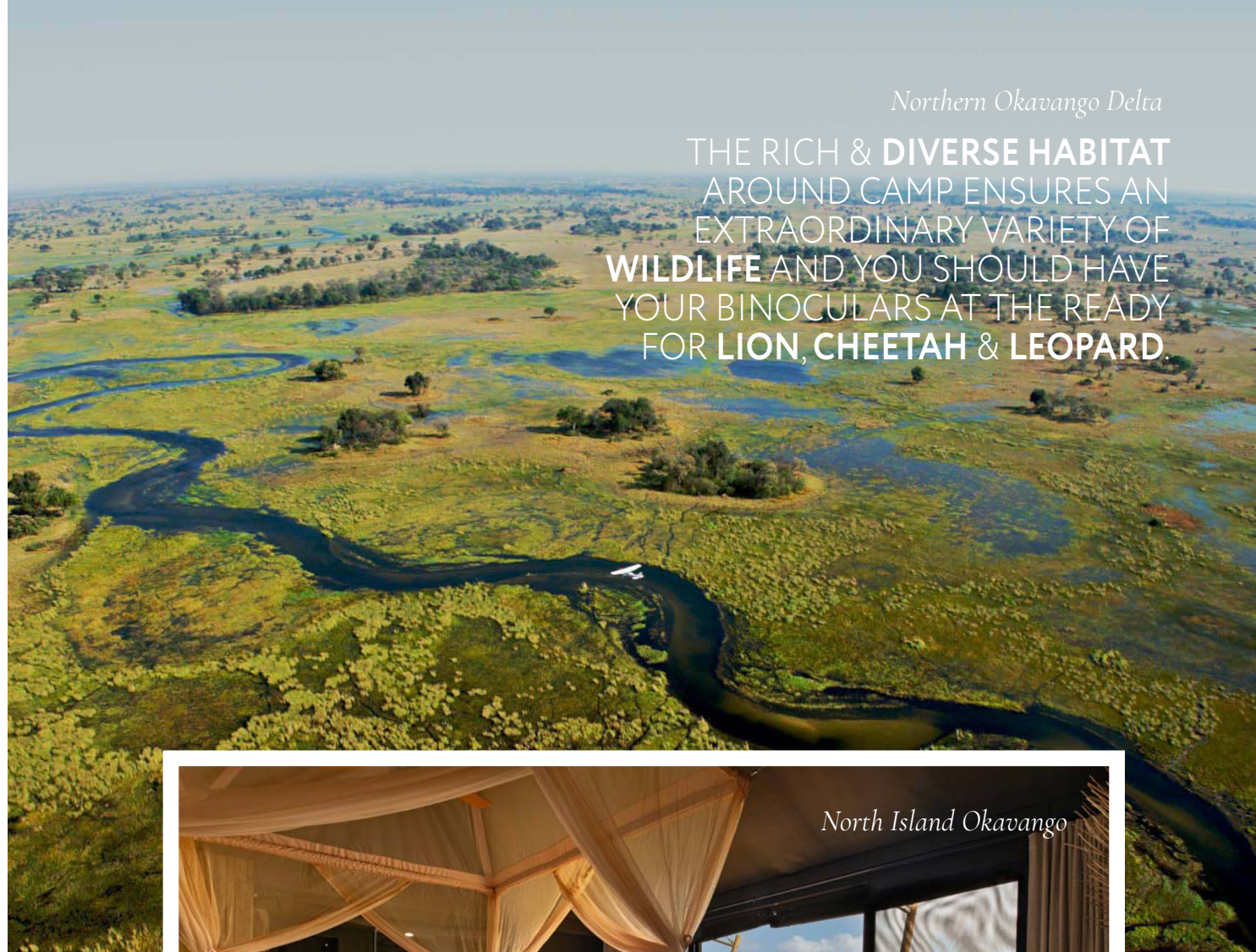


You can't dream this kind of adventure up. North Island Okavango is located on a private island, surrounded by a mosaic of other islands all netted together by shining lagoons and transient channels. Between the floodplains, open savannah and woodlands, there is an abundance of wildlife everywhere.

Each tent has been designed around a congregation of beautiful big trees, with exceptional lagoon views. Delights of ebony, mangosteen, rain trees, leadwood and wild fig. The adventure here comes to you in waves, as you safari amongst the islands, rich with wild things and extraordinary beauty. This is without doubt, a quintessential Okavango Delta safari experience.

### Special Rate

R9,665 pppn, plus R275 CCR Fee  
 Children 6 yrs and older are welcome.



*Northern Okavango Delta*

THE RICH & DIVERSE HABITAT  
 AROUND CAMP ENSURES AN  
 EXTRAORDINARY VARIETY OF  
**WILDLIFE** AND YOU SHOULD HAVE  
 YOUR BINOCULARS AT THE READY  
 FOR **LION, CHEETAH & LEOPARD.**



*North Island Okavango*



Duke's Camp



Duke's East

## DUKE'S CAMP & DUKE'S EAST

Northern Okavango Delta



From the creators of Jack's Camp, we bring you the intimately wild and impossibly stylish Duke's Camp and Duke's East. Adjacent camps, they both offer serious safari panache in an unfiltered African wilderness.

Drawing inspiration from the crystal-clear channels of the Okavango Delta that wind sinuously around both camps, they are set on a vast concession rich in game and natural beauty delivering not only in abundance and inimitable safari style, but also offering a real wild safari of old.

### Special Rate

R6,545 pppn, plus R275 CCR Fee  
Children 6 yrs and older are welcome.

FIND YOURSELF ON  
**NEW ADVENTURES,**  
LOSE YOURSELF IN  
THE EXPERIENCE

# MBAMBA

## Northern Okavango Delta



This is where the wildlife action never stops! Brought to you by the Uncharted Africa team in the private NG12 concession, here your wildlife adventure awaits. Located in an area that provides superb game viewing year-round, it has an old school safari elegance about it and offers remarkable guided wilderness experiences.

Sitting peacefully underneath a forest of leadwood trees, each of the 12 stylish tents lines up artfully along a pearl necklace of waterholes, with wildlife constantly close by. It is here in this woodland of wonder that the magic happens. This is a different Delta experience, and an ideal camp for those seeking a very relaxed environment and a deeper understanding of the natural world.

---

### *Special Rate*

R4,715 pppn, plus R275 CCR Fee  
*Children 6 yrs and older are welcome.*





## EXPEDITIONS CAMP

Northern Okavango Delta



Pitched in a hidden crease in the northern reaches of the Okavango Delta, this semi-permanent expedition-style camp is affordably priced and designed to evoke the spirit of early safaris, where adventure comes first, comfort follows closely behind, and the whole experience feels timeless in the best possible way.

### *Special Rate*

R4,715 pppn, plus R275 CCR Fee  
*Children of all ages are welcome.*

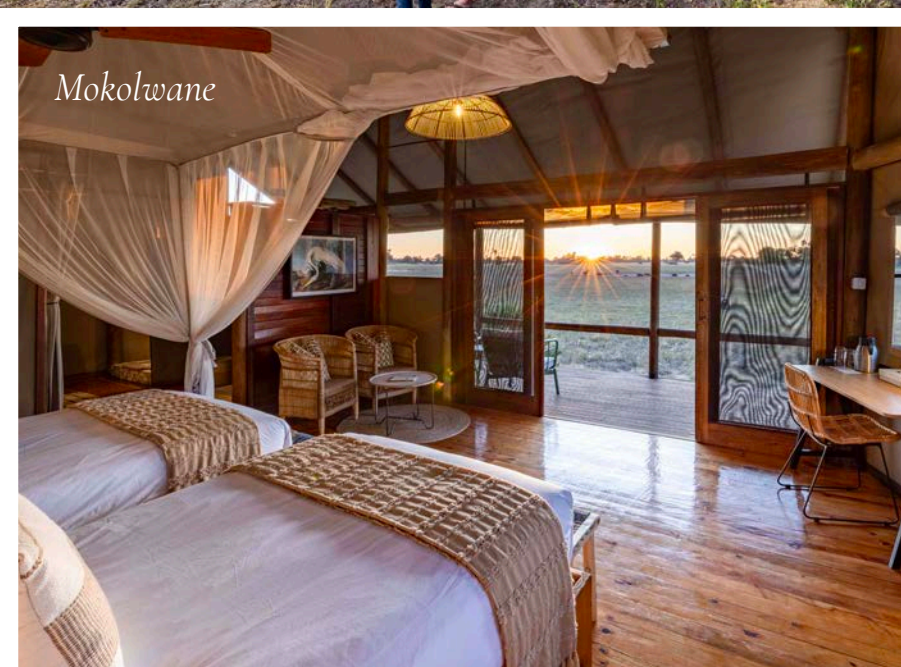


## Southern Okavango Delta



## SOUTHERN OKAVANGO DELTA

NG29 situated on the south-western corner of the Okavango Delta, is one of the largest concessions in Botswana and a vast wilderness area that is virtually untouched. A drive around the whole concession would take a number of days. The diverse eco-system here is a playground of open grasslands, fertile floodplains, crystal clear lagoons, reeded islands, riverine and mopane forests, creating a wonderfully varied landscape for birds and wildlife to live in.



Mokolwane

## MOKOLWANE Southern Okavango Delta



This small, relaxed camp, set amongst a sprinkling of Mokolwane palms, is the only camp found in 200 000-hectares of raw wilderness. Home to big herds of elephant, buffalo and prolific predators, it boasts the third highest density of leopard recorded in Africa and it is no surprise renowned wildlife filmmaker Brad Bestelink has chosen to base himself here. This is a special little camp, big on adventure.

### Special Rates

R4,715 pppn, plus R275 CCR Fee  
Children 6 yrs and older are welcome.



## MOREMI GAME RESERVE

Covering nearly 5000 square kilometres of wilderness, the Moremi Game Reserve is the oldest protected section of the Okavango Delta, a proclaimed World Heritage Site. It lies on the eastern edge of the Okavango Delta and was named after Chief Moremi of the Batawana tribe. Because this was ancestral land set aside for conservation it is designated as a game reserve, rather than a national park. Tawana is located in the south-eastern sector of the reserve, immediately to the east of the famous Qorokwe and Chitabe Concessions. The camp is situated on the eastern bank of the Gomoti River, with views out across the river and surrounding game-rich floodplains.

## TAWANA

Moremi Game Reserve



Set amid a pristine landscape of Botswana's iconic Moremi Game Reserve, Tawana blends the romance of a contemporary safari camp, with unforgettable safari experiences. It offers an unrivalled discovery of the Okavango Delta and the wider wilderness ecosystem of northern Botswana. Opened in May 2024, Tawana has been created to stand in harmony with the lush forests and grasslands that line the banks of the perennial Gomoti river.

In Tawana we celebrate both the cultural heritage and rich wilderness of the region while offering a handful of fortunate guests the freedom to experience one of the last truly wild corners of Africa.

### Special Rate

R9,665 pppn, plus R275 CCR Fee  
 Children 6 yrs and older are welcome.

Moremi Game Reserve



Tawana



## THE THAMALAKANE RIVER

Located at the Southern-eastern edge of the Okavango Delta, the meandering waters of the Thamalakane River manoeuvre their way through the frontier town of Maun, the gateway to northern Botswana and the last stop before the Okavango Delta. A life source to this buzzing little safari town, as the river ebbs and flows throughout the year to the beat of its own drum, its banks overflow with an abundance of bird, plant and wildlife, to bring a renewed energy to the area and water relief to the Maun residents.

## THAMO TELELE

Maun



Set amongst a lush forest of old growth leadwood, bird plum and acacia trees, Thamo Telele, is a little bush haven and the perfect hideaway for guests wanting to spend a few nights close to Maun, the last stop and gateway to the Okavango Delta. This safari style camp is set in a 250-hectare private reserve on the banks of the Thamalakane river, an area packed with plains game, ideal habitats of river, riverine and dry savannah. A hot spot for bird lovers and wildlife enthusiasts – you'll be spoilt for choice when it comes to all you can see and do here. This really is the ideal place to start or end your Botswana safari!

### Special Rates

R2,785 pppn - Dinner Bed & Breakfast

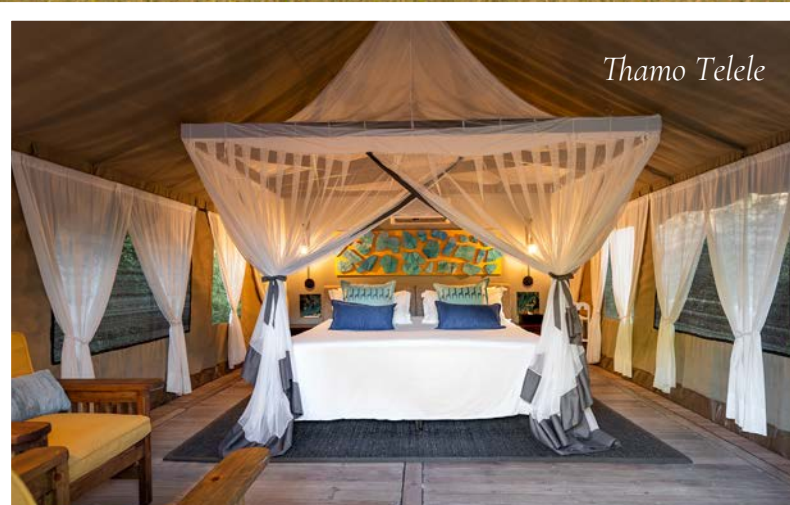
R3,920 pppn - Fully Inclusive

*Rates exclusive of R275 CCR Fee*

*Children of all ages are welcome.*

*Thamo Telele*

GET TO KNOW OUR  
HERD OF RESIDENT  
GIRAFFE WHICH CAN  
BE IDENTIFIED AND  
OBSERVE WHILE ON  
ACTIVITIES IN THE  
RESERVE.



*Thamo Telele*



## THE KALAHARI

### The Makgadikgadi Pans

A living desert and intriguing landscape, the Makgadikgadi Salt Pans form a large part of the Kalahari Basin and the shimmering, salt-baked setting is iconic in its beauty and size. The pan is one of the largest in the world and can be easily seen from space. With iridescent horizons that bend to infinity, this is a place that defines isolation but dig a little deeper below the surface and you'll discover the people and the wildlife that call the seemingly inhospitable area home. In fact, the three camps in our one million-acre concession offer the widest variety of wilderness based activities anywhere in Africa and you can enjoy game drives, quad biking, horseback safaris, nature walks with the San bushmen, meerkat visits, sleep outs, birding, botanising and a whole lot more...



*The Migration*

*The Makgadikgadi Salt Pans*

**LOSE CONTACT WITH TIME, SPACE AND DIRECTION.... OPEN THROTTLE, CLOSE YOUR EYES AND TRAVEL KNOWING THERE IS NOTHING TO CRASH INTO UNTIL YOU FALL OFF THE EDGE OF THE EARTH.**



## JACK'S CAMP

Makgadikgadi Pans, Kalahari Desert



For several decades, Jack's Camp has set the standard for style and desert experiences in the Kalahari. It pays homage to the property's enduring and much loved 1940s campaign style. The camp sits in a striking spot on the edge of Botswana's Makgadikgadi Pans, gazing over glittering salt pans and shimmering expanses of sun-scorched earth.

It's an oasis of style and old-world glamour in a landscape of savage beauty. The safari experience at Jack's is unique. At first sight the lunar like salt pans appear devoid of life, but in the hands of the knowledgeable safari guides the story of the Makgadikgadi begins to unfold.

Whether it's quad biking out into the remnants of the super lake, hunting for stone tools in the crusty salt flats or seeing the world through the eyes of the San bushmen, this is a safari where the focus is on learning, appreciating and being humbled by a vast and ancient landscape. Jack's truly is an African safari icon.

### Special Rates

R9,665 pppn, plus R275 CCR Fee  
Children of all ages are welcome.

Jack's Camp

“SUITED, I WOULD SAY, FOR THE BETTER CLASS OF MAHARAJAH.”

Thomas Pakenham



## SAN CAMP

Makgadikgadi Pans, Kalahari Desert



Seven, billowing white tents, shaded by desert palms and surrounded by a thousand acres of shimmering, sparkling nothingness. This is San Camp, an impossibly romantic hideaway on the edge of the Nwetwe Pan in the Makgadikgadi. Here, the magic is in the minimalism, both at the camp and in the mysterious desert landscape. You can forget the tourist crowds and over-stuffed 4x4s too; it's just you, the wildlife, and a handful of local San Bushmen, waiting to share their secrets with you. This is a place that's a million miles from glowing screens and hand-held devices and one that will get under your skin in more ways than you can imagine.

### Special Rates

R6,545 pppn, plus R275 CCR Fee  
Open Apr - Oct. Children of all ages are welcome.

## CAMP KALAHARI

Makgadikgadi Pans, Kalahari Desert

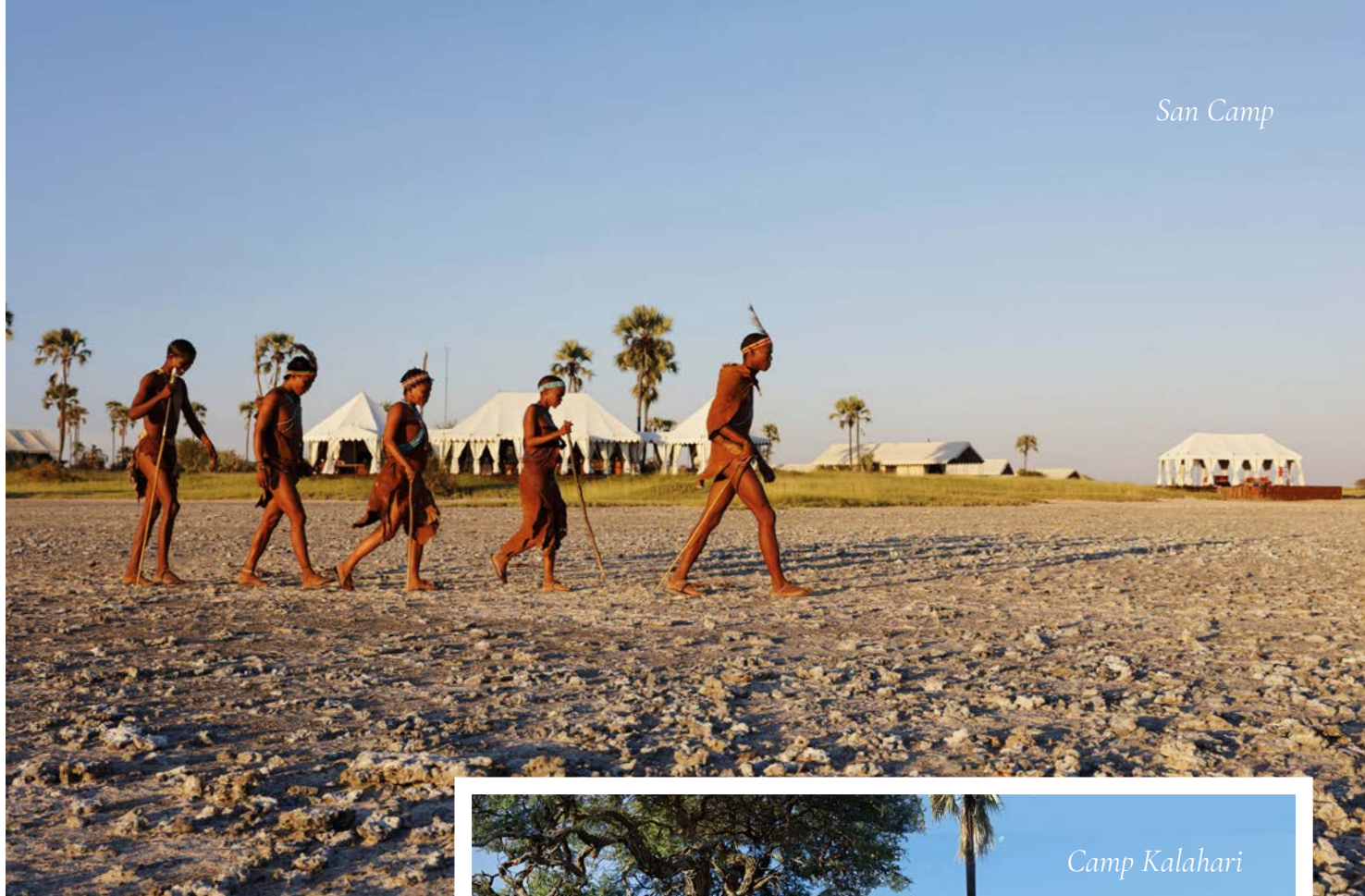


The laid-back little sister of Jack's and San, Camp Kalahari is understated and affordable and set in the heart of the Kalahari amongst the waiving palms and acacia trees on Brown Hyena Island in the Makgadikgadi. The 12 cool Meru tents are perfect for families, groups and couples, and are an ideal base for discovering the charms of the desert and the Makgadikgadi Salt Pans. Here you'll meet the 'Kalahari cool cats', the habituated meerkat family who like nothing more than to use unsuspecting guests as lookout points. With a hive of activities, from game drives, quad bike safaris, horse riding and bushmen walks. Camp Kalahari is a great camp for families.

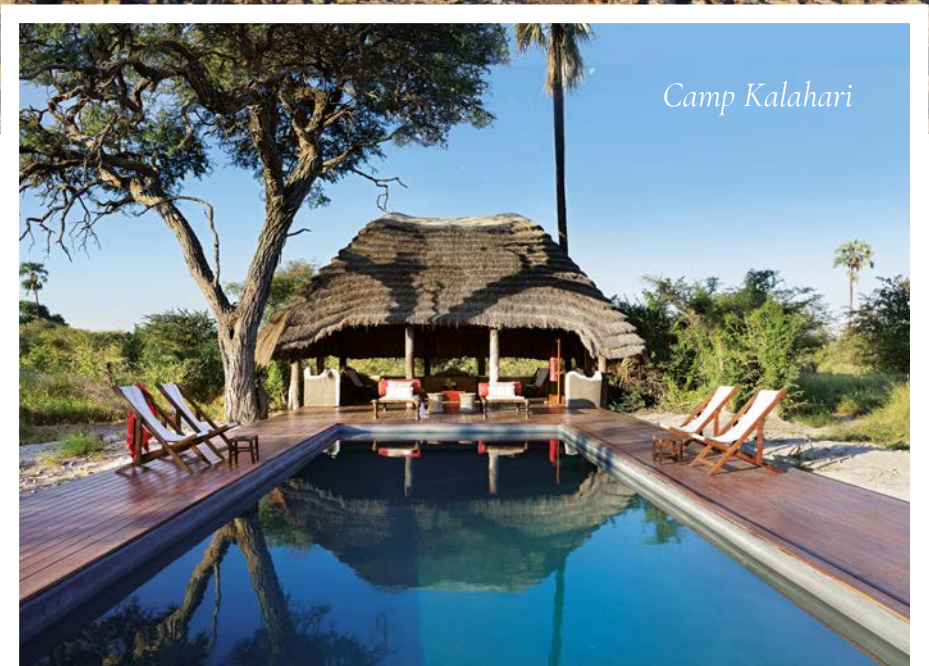
### Special Rates

R4,715 pppn, plus R275 CCR Fee  
Children of all ages are welcome.

San Camp



Camp Kalahari





## THE BOTETI RIVER Makgadikgadi

A beautiful, ephemeral river of swirling pools and meandering channels, the Boteti forms the western boundary of the Makgadikgadi Pans National Park. One of the only water sources for many miles, the river is a magnet for thirsty resident wildlife year-round. Then, in April, tens of thousands of zebra complete their journey at the river in an explosion of black and white stripes, followed closely by herds of wildebeest and their accompanying predators. This is Southern Africa's largest mammal migration and a magical time to be in the area.

## MENO A KWENA

Boteti River



The safari never stops at Meno a Kwena, a hidden gem perched on a rocky clifftop overlooking the Boteti river with front-row seats to the comings and goings of the wildlife below. A mere 90-minute drive from Maun, the camp was originally used by Southern Africa's legendary explorers and although we've added a few little touches here and there, it's refreshingly simple and full of character. The real treat at Meno, however, is the connection with nature; when an elephant provides your alarm call in the morning and you can game view straight from your private veranda, nothing else really matters.

### Special Rates

R4,715 pppn, plus R275 CCR Fee  
*Children of all ages are welcome.*

*The Boteti River  
Migration*



*Meno a Kwena*



## PLANET BAOBAB

Makgadikgadi Pans, Kalahari Desert



Follow the road pointed out by the giant anteater and you will discover the intriguingly named Planet Baobab, located in the Baobab capital of the world.

This is a place where the average age of each tree is 4000 years and the boundless lunar landscape of the Makgadikgadi Salt Pans, an area the size of Switzerland, stretches as far as your eyes can see.

Here you'll sleep in basic but oh so Afro-chic Bakalanga Huts, swim in the largest and coolest pool in the Kalahari, eat the best pan-African cuisine, and drink cheap beer in the funkiest bar in Africa with vagabonds, travellers, and locals. It's by far the coolest desert oasis around – and definitely worth a visit.

### Special Rates

R2,255 pppn - Bakalanga / Baobab Twin Hut

R2,520 pppn - Bakalanga Family Hut

Plus R110 CCR Fee

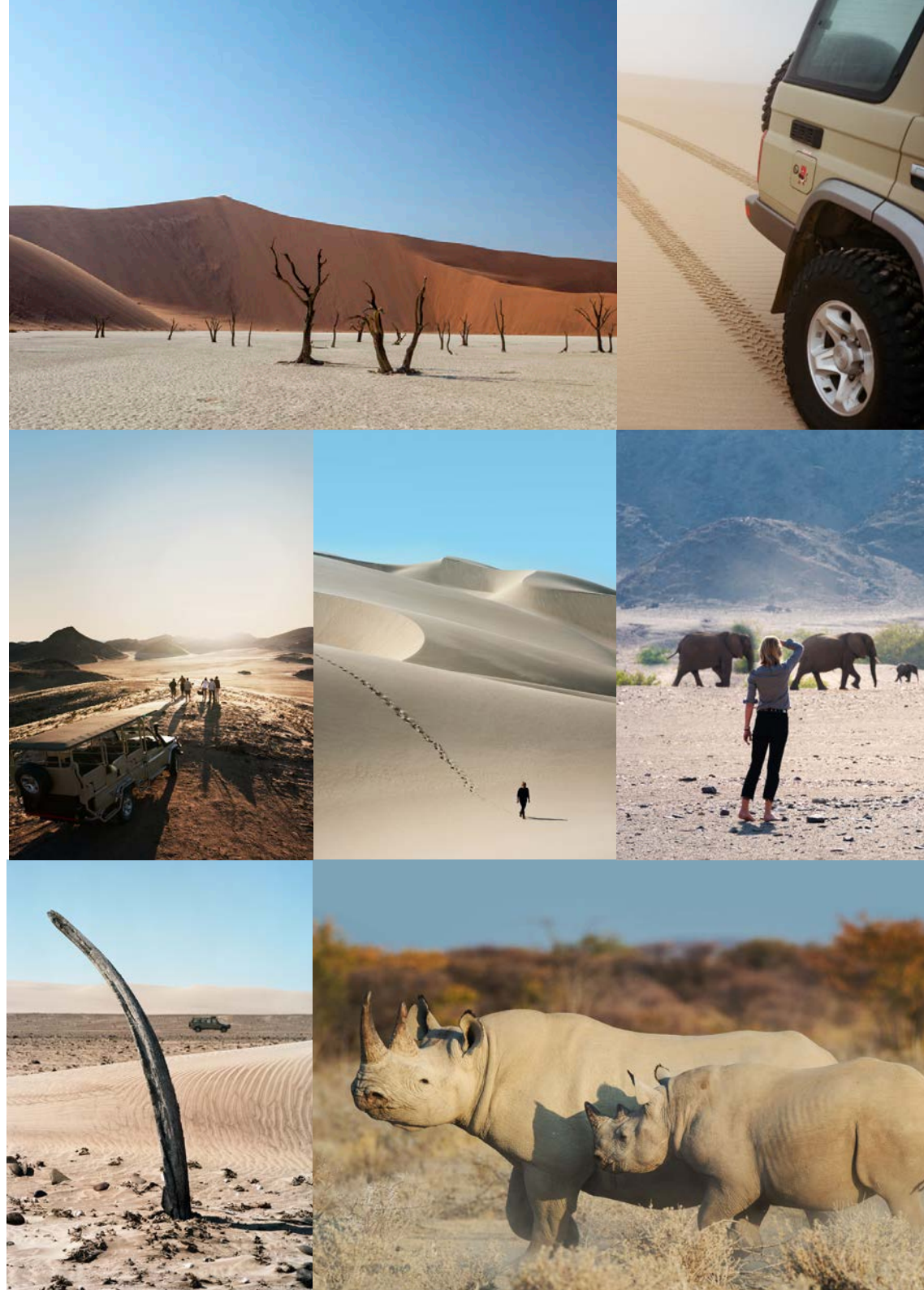
Children of all ages are welcome.



# NAMIBIA

---

REMOTE, **AWE - INSPIRING**  
AND ENCHANTING, NAMIBIA  
IS A COUNTRY THAT TAKES  
YOU FURTHER **OFF THE GRID**  
THAN YOU EVER THOUGHT  
POSSIBLE. IT'S ALSO A  
COUNTRY THAT LOVES TO  
**SURPRISE.**





## NAMIBRAND NATURE RESERVE

Located just south of the iconic dunes of Sossusvlei, the NamibRand is an extraordinary private nature reserve, established to protect and conserve the wildlife of this corner of the Namib Desert. At over 200,000 hectares, it's one of the largest private reserves in Southern Africa – and one of the most striking. Think vast swathes of savannah, gravel plains dotted with tiny inselbergs, and pockets of green vegetation all backed by the enormous, blood-red mountains that have undoubtedly made the area famous. Also recognised as a Dark Sky Reserve, it lies in one of the darkest (yet accessible) places on earth.

### KWESSI DUNES NamibRand Nature Reserve

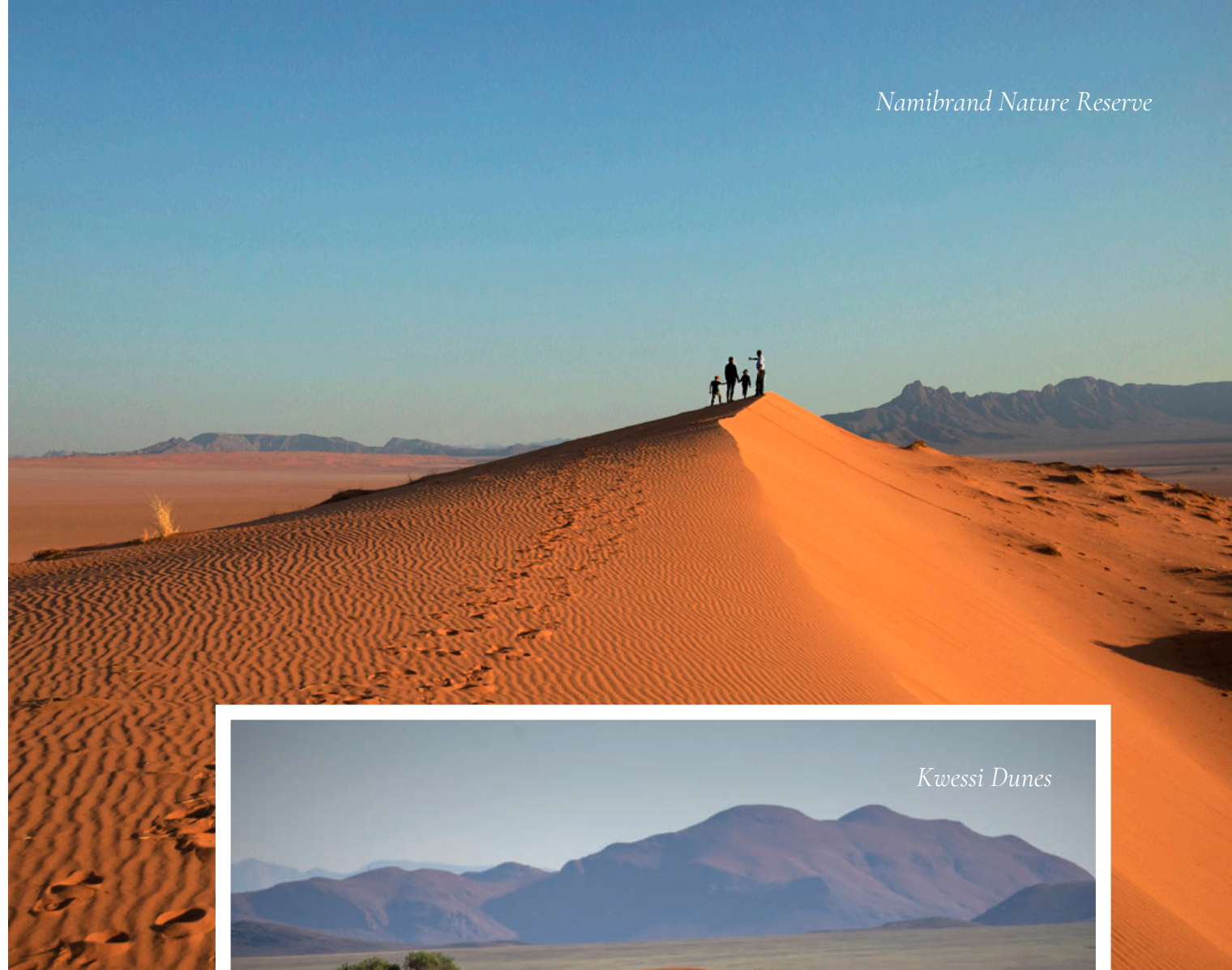


Located deep in heart of Namibia's striking NamibRand Nature Reserve, at Kwessi Dunes time stands still and the space is never-ending. This is a stylish canvas-and-thatch camp run entirely from solar power. With 12 cool and comfortable (air-conditioned) chalets, each bedroom has a separate 'star gazer' room, completely open to the sky. Views from the rooms, the main area and the swimming pool are of the vast desert vistas. This is a private experience on a private reserve and the hyper-arid terrain makes it amazing in all seasons.

### *Special Rates*

R5,515 pppn, plus R275 CCR Fee  
*Children of all ages are welcome.*

## *Namibrand Nature Reserve*



*Kwessi Dunes*

## Hoanib Valley Camp



## HOANIB VALLEY Kaokoland

In a country jam-packed with vast and beautiful landscapes, Kaokoland may just be the most incredible of them all. Deep in north-western Namibia, the area is a melee of towering mountains, sand dunes, and huge expanses of desert, scattered with unique wildlife and nomadic Himba settlements. It's also one of Namibia's most remote and wild environments, and one that not many will get the chance to discover in a lifetime.



## HOANIB VALLEY CAMP Kaokoland



Hoanib Valley Camp is an elegant, intimate affair that immerses you into the wilds of the desert. The six rooms blend seamlessly with the environment, offering a simple aesthetic that matches the rugged landscape down to a tee. With a sparkling pool to cool you off after your day spent tracking desert-adapted elephant and giraffe, retire to your veranda to marvel at the magnitude of your surroundings.

### *Special Rates*

R5,515 pppn, plus R275 CCR Fee  
*Children of all ages are welcome.*

## HOANIB ELEPHANT CAMP

Kaokoland



Hoanib Elephant Camp lies in one of the most remote and remarkable corners of Namibia's untamed northwest. Designed for adventurous travellers seeking both wild desert immersion and exceptional comfort, the camp offers a rare opportunity to encounter desert-adapted elephants as they roam ancient riverbeds in search of water and food—an extraordinary glimpse into one of Africa's most remarkable adaptations.

### *Special Rates*

R6,070 pppn, plus R275 CCR Fee  
*Children of all ages are welcome.*



## Etosha Heights Private Reserve



## ETOSHA HEIGHTS PRIVATE RESERVE

Founded in 1999, Etosha Heights shares a 65 km border with the famous Etosha National Park. The reserve, a conservation success story, offers 60,000 hectares of unspoiled wildlife, landscapes, and tranquillity; truly a place to reconnect with nature and escape the modern stresses of life. Wildlife-wise, you'll find lion, cheetah and many of Namibia's fascinating desert species, but the reserve is most famous for its strong population of both black and white rhino.



## SAFARIHOEK

Etosha Heights Private Reserve



A modern and spacious lodge with 180-degree views of the wildlife roaming the savannah, a swimming pool and a double-storey photography hide. Safarihoek is perched on top of a hill overlooking the plains of Etosha Heights below, a classic Namibian lodge with some of the best views in the business. Famous for rhino sightings and an abundance of big game. This is a place of silence and solitude, and a rare opportunity to be at one with nature and the animals that thrive here.

### Special Rates

R4,715 pppn, plus R275 CCR Fee  
Children of all ages are welcome.

*Etosha Mountain Lodge*

## ETOSHA MOUNTAIN LODGE

### Etosha Heights Private Reserve



The air-conditioned thatched chalets of Etosha Mountain Lodge are perched on a dolomite hill offering panoramic views of the iconic Namibian landscape with an abundance of big game and wildlife. Etosha Mountain Lodge is an affordable base in the heart of Etosha Heights. A bright and breezy 'lapa' area is the feature of the lodge, and under the thatch you'll find the restaurant. No matter where you choose to relax, the panoramas stretching ahead are magnificent.

### *Special Rates*

R4,715 pppn, Plus R275 CCR Fee  
*Children of all ages are welcome.*



## Nkasa Rupara National Park



## NKASA RUPARA NATIONAL PARK

Tucked between the Linyanti and Kwando rivers, on the southern border of Namibia's lush Zambezi region, Nkasa Rupara National Park is a vital piece of the greater conservation 'puzzle' that is the Kavango-Zambezi Transfrontier Conservation Area.

With reed-lined channels, shimmering grasslands, and crystalline waterways reminiscent of the nearby Okavango Delta, Nkasa Rupara serves as a crucial corridor for wildlife moving between Angola, Botswana, Namibia, and Zambia.



## NKASA LINYANTI Etosha Heights Private Reserve



Nkasa Rupara National Park in north east Namibia boasts a rich biodiversity, and is home to rare and endangered species. Opening in 2026, this intimate camp shaded by a canopy of trees, is the only camp on the private Nkasa Island, offering atmospheric accommodation in six canvas tents with stunning views of the Linyanti floodplain.

### Special Rates

R5,515 pppn, plus R275 CCR Fee  
Children of all ages are welcome.

## Shipwreck Lodge



## SKELETON COAST

North-western Namibia is the kind of raw and rugged wilderness that many places claim to be but so few actually are. Located along the western Atlantic Coast, the Skeleton Coast is a hauntingly picturesque region. Its beaches are strewn with whale bones and the wrecks of countless ships, whilst the interior is an uninhabited desert of rolling, endless sand, mountains, picturesque plains, clay castles and desert-adapted wildlife.



## SHIPWRECK LODGE

Skeleton Coast



Designed to resemble the enigmatic shipwrecks that line the hauntingly beautiful Skeleton Coast, Shipwreck Lodge is one of the most unique and dramatic on the continent. It's the only private lodge within the northern section of the Skeleton Coast National Park, an area that contains irreplaceable wildlife habitat for species of the highest conservation importance. Game drive in search of desert-dwelling fauna; And if you are lucky, you could even encounter brown hyena, jackals and lion hunting Cape fur seals on the beaches. Discover the enchanting desert flora (succulents and lichens); sit atop the dunes as the sun sinks below the horizon; spend the day beach-combing for whale bones and debris from centuries of shipwrecks; and marvel at the geologically-remarkable Clay Castles.

### Special Rates

1 April - 30 June & 1 Nov - 19 Dec: R12,045 pppn

Only bookable within 30 days prior of travel from 1 July - 31 Oct 26 and 20 Dec 26 - 9 Jan 27

Children of all ages are welcome.

# SOUTH AFRICA



## DE HOOP NATURE RESERVE

Undoubtedly one of the most glorious coastal reserves in South Africa, located little more than three hours' drive from Cape Town, De Hoop is famous for its exceptional whale watching, and its shores come alive from June to November when southern right whales and their calves migrate here from Antarctica in their hundreds. But it's not just the whales that make it remarkable, you'll spend your days discovering the rich intertidal ecosystem and the unique fynbos vegetation that blankets the dunes enjoying a world of adventure right on your doorstep.



*Southern Right Whales*



*De Hoop Nature Reserve*

## LEKKERWATER

### De Hoop Nature Reserve



With a rich history, incredible fauna and flora, pristine beaches, rolling hills and abundant sea life, the focus at Lekkerwater is on an immersive nature-based experience. Here we offer a new kind of luxury. The indulgence of wide-open spaces, peacefulness and privacy. This is an entirely unique coastal experience in the heart of South Africa's scenic Western Cape.

### Special Rates

#### BOOKABLE WITHIN 3 MONTHS OF TRAVEL:

10 January - 12 April: R4,500 pppn

13 April - 30 Sept: R3,900 pppn

1 Oct - 14 Dec: R4,500 pppn

15 Dec 2026 - 9 Jan 2027: R4,900 pppn

#### BOOKABLE ANYTIME:

10 January - 12 April: R6,990 pppn

13 April - 30 Sept: R3,900 pppn

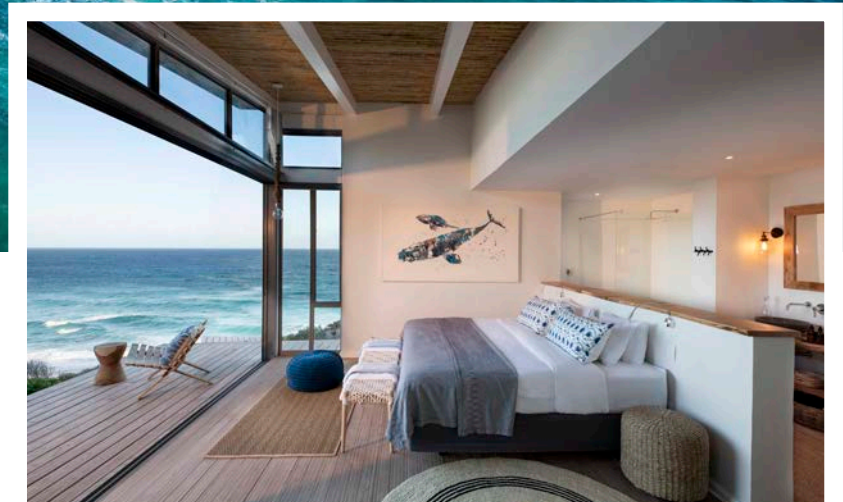
1 Oct - 14 Dec: R6,990 pppn

15 Dec 2026 - 9 Jan 2027: R7,500 pppn

EXCLUSIVE USE: 13 Apr - 30 Sept: R46, 800

(Bookable anytime | Maximum of 14 guests)

*All rates include: All meals, local drinks and most lodge activities. Excludes: Our Community, Conservation & Reserve fee (CCR) of R300 pppn. Children 6 years and older are welcome.*



KIDS GET **50% OFF**  
THE ADULT RATE  
WHEN SHARING  
THE FAMILY ROOM



## MKAMBATI NATURE RESERVE

This fabulous reserve is situated along the Wild Coast of South Africa in the Eastern Cape between Port Edward and Port St Johns. It must rank as one of the most beautiful coastal reserves anywhere in Africa. Mkambati's rolling grasslands give visitors the sense of being in the Serengeti – but with the Indian Ocean as the backdrop. There are few places on earth where one can watch a big herd of eland, blesbok or zebra with dolphins and whales at the same time, or stroll along a beach where the only other footprints are from an otter. Mkambati Nature Reserve is perfect for families and couples; indeed, for anyone longing for an unspoilt coastal destination and for those who wish to experience the Wild Coast away from the crowds.

## GWEGWE BEACH LODGE

Mkambati Nature Reserve, South Africa



If your idea of paradise involves unspoiled landscapes, pristine coastlines, and a symphony of nature's wonders, then pack your bags and set your compass to GweGwe Beach Lodge. A hidden gem along the Wild Coast of South Africa, this is where luxury and adventure take centre stage. Arrive by plane, heli, boat or self-drive – there really is no excuse not to get here.

### Special Rates

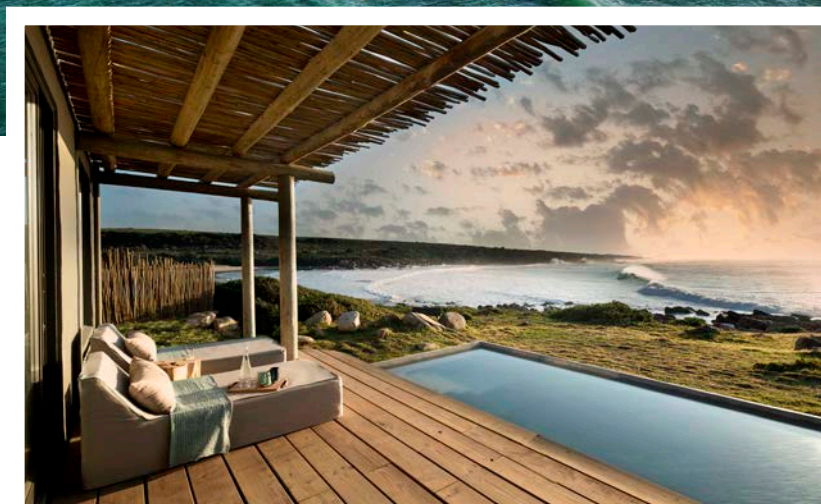
BOOKABLE WITHIN 60 DAYS OF TRAVEL:

8 Jan – 19 Mar | 7 May – 14 Jun | 1 Aug – 22 Sep | 6 Oct – 30 Nov: R3,825 pppn  
 20 Mar – 6 May | 15 Jun – 31 Jul (Sardine Run) | 23 Sep – 5 Oct | 11 – 19 Dec: R4,675 pppn  
 20 Dec 26 – 7 Jan 27: R8,415 pppn

BOOKABLE ANYTIME:

8 Jan – 19 Mar | 7 May – 14 Jun | 1 Aug – 22 Sep | 6 Oct – 30 Nov: R4,500 pppn  
 20 Mar – 6 May | 15 Jun – 31 Jul (Sardine Run) | 23 Sep – 5 Oct | 11 – 19 Dec: R5,500 pppn  
 20 Dec 26 – 7 Jan 27: R9,900 pppn

*All rates include: All meals, local drinks and most lodge activities. Excludes: Our Community, Conservation & Reserve fee (CCR) of R300 pppn. Children 6 years and older are welcome.*



OFFER VALID  
FOR SA  
RESIDENTS  
ONLY

“IT’S NOT A HOLIDAY,  
IT’S AN ADVENTURE!”

Finlo Clarkson, Age 10

KIDS GET **50% OFF**  
THE ADULT RATE

## OUR TERMS AND CONDITIONS

- All travellers must be African Residents and we require proof of residency / citizenship to confirm a reservation.
- Our rates are well-below advertised prices and are strictly confidential.
- No commercial resale allowed. Local travel agents, please contact us directly.
- All rates and bookings are subject to availability.
- Transport rates and costs are additional to the nightly rate.
- A non-refundable per person per night Community, Conservation and Reserve Fee (CCR) is added to each bed-night booked at Natural Selection properties. The CCR is crucial for uplifting communities, protecting wildlife, and securing and managing wildlife habitats in the areas in which we operate.
- CCR fee is not applicable for children aged 0-5 years but does apply to children 6 years and older.
- Our rates are all per person per night (sharing) and inclusive of: accommodation, all meals and drinks, guest laundry, daily activities, expert guiding, park entry fees & VAT.
- Rates exclude: Premium brand drinks, gratuities and fully comprehensive personal travel insurance.
- Single supplements may apply.
- Natural Selection reserves the right to remove or amend camps and rates at any time.
- Our Botswana and Namibia rates (excl. Shipwreck Lodge) are bookable within 60 days of travel from now until 31 March 2027 (excluding Oct-Nov 2026, and Jan, Feb, March 2027) and within 90 days of travel from now until 9 Jan 2027 for Lekkerwater in South Africa.
- Shipwreck Lodge is bookable 30 days prior to travel for 1 July - 31 Oct 26 and 20 Dec 26 - 9 Jan 27.
- Children aged 6-18 years get 50% off the adult rate.
- Standard child policy applies.
- Included in the published rate is a conservation contribution, which is collected by Natural Selection Safaris on behalf of a Not-for-Profit Conservation Trust.
- In Botswana and Namibia families travelling with children aged 9 or younger are required to book and pay for a private vehicle.
- We reserve the right to limit the number of beds booked on SADC rates.
- Rates are quoted in South African Rands.
- Natural Selection Safaris' Standard Terms & Conditions apply.

Planning and booking your trip couldn't be easier.

**FOR ALL ENQUIRIES & RESERVATIONS CONTACT**

[reservations@naturalselection.travel](mailto:reservations@naturalselection.travel)

+27 21 001 1574

[www.naturalselection.travel](http://www.naturalselection.travel)